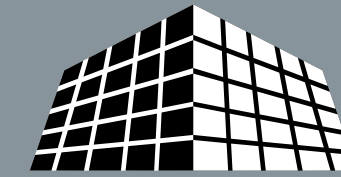


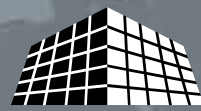
AES Offers:

- Panelized Wall Systems
- Light-Gauge Metal Trusses
- MCM Panel Systems
- Architectural Cladding Systems
- Rain-Screen Wall Systems



ADVANCED EXTERIOR SYSTEMS

Panelized Wall Systems



ADVANCED EXTERIOR SYSTEMS
Panelized Wall Systems

3640 Banks Road, Raleigh, North Carolina 27603
919.772.3313 Phone 919.772.5897 Fax
www.advancedexteriorsystems.com



The Panelized Wall Systems designed and built by Advanced Exterior Systems will give your next project the clean, innovative and dramatic appearance you are looking for. These products will also provide years of maintenance free performance for any type of structure. Our panel systems are fully tested per ASTM requirements including air and water infiltration, structural and seismic criteria.



MISSION STATEMENT:
Every member of our team is committed to long term relationships with our clients, based on safety, meeting expectations and quality. Our commitment to this mission provides an environment that encourages new ideas, focused teams, and continuous improvement.

PANELIZED WALL SYSTEMS

Panelization is the prefabrication of exterior or interior wall assemblies, manufactured in a controlled environment using conventional building components. Exterior panels are available in a variety of finishes including Synthetic stucco (EIFS), stucco, thin brick, ceramic tile, and cultured stone or as backup for conventional masonry products.

During site preparation, we can design, engineer as required, and fabricate the exterior of your next project. We have over 70,000 square feet of climate controlled manufacturing facilities that allow us to manufacture year round with no interruption due to weather. Once the product is complete, we store as required on our seventeen acre site.

All shop drawings and panel connections are engineered and approved by the project architect prior to the start of panel fabrication. Plans are reviewed and stamped by a structural engineer as required. This process eliminates potential problems prior to site delivery and all panels are inspected at every stage of production as they pass through the plant. Everyone is involved in the quality control process; from the design to construction to erection.



ADVANTAGES OF PANELIZED EXTERIORS INCLUDE:

- Substantial reduction in project duration
- Engineering as required
- All construction completed in a controlled environment
- Overall cost savings
- Both load bearing and non-load bearing assemblies available
- Panel erection by AES personnel
- Continuous supervision and quality control
- Minimizes disruptions on site
- Improves safety

Sustainability

- Design flexibility that contributes toward LEED certification
- Better coordination through combined scopes.
- Reduction of Jobsite Waste by 90%.
- Reduction of Manufacturing Waste / Efficient use of resources.
- Manufactured within 500 miles.
- Innovative Design and Construction Process.
- Reduction of Jobsite Materials/Labor/ Vehicle Use
- More work off-site = easier prevention of construction activity pollution..



Wachovia @ North Hills, Raleigh, NC
Before panelized wall systems



Wachovia at North Hills, Raleigh, NC
After panelized wall systems